

Causeway Ermeo

Causeway Ermeo is a mobile workforce management solution that connects your site and office-based teams on web and mobile software. Simplify, standardise and digitise your operational processes.

- 20% increase in operational efficiency on average
- 70% fewer job revisits on average
- 100% automated reporting and standardisation

Built on mobile-first principles, you can effortlessly build and structure your own forms and field-based processes, then access and manage them through the mobile app, which is available on both iOS and Android devices.



Interactive mobile forms

Improve the productivity of your operators by allowing them to easily and quickly collect field data. Thanks to our intuitive editing studio, you can digitise all types of documents, including maintenance ranges, audits, inspections, etc.

Pre-filled forms

Help your operators save time by pre-filling job forms with the correct data from your systems and databases. Ensure the accuracy of entries by displaying the last value entered, with alerts telling operators when values are wrong.

360° view of your assets

Make the knowledge of your assets accessible in the field, so operators can find information like plans, technical characteristics, manufacturer documents and job histories, etc.

Quick access to this data improves decision making and increases the efficiency of your workforce.

Job transfer and validation

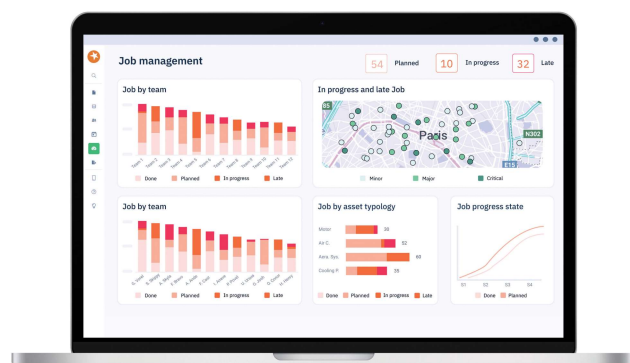
Reduce how long information takes to travel between your teams and partners, like customers, service providers, and clients - and get full control of report status validation.

Also, multiple users can collaborate in real-time during the job's execution.

Personalised reporting

Speed up your response times with automated reporting, whether internally to leadership or externally to customers and service providers.

Standardise reporting to save time, reduce retyping errors and improve deliverable quality.



Update databases in the field

Improve your asset knowledge by updating databases in real-time and by referencing unlisted equipment directly from the field.

Maintain a history of values

Store a complete history of values and their variations in a database to form a comprehensive audit trail that's easily traced.

Enrich best practices

Improve knowledge sharing and circulate best practice between your teams, with simple access to legacy data from the field.

User access management

Easily manage your data privacy policies and only give users access to the information they need to do their job.

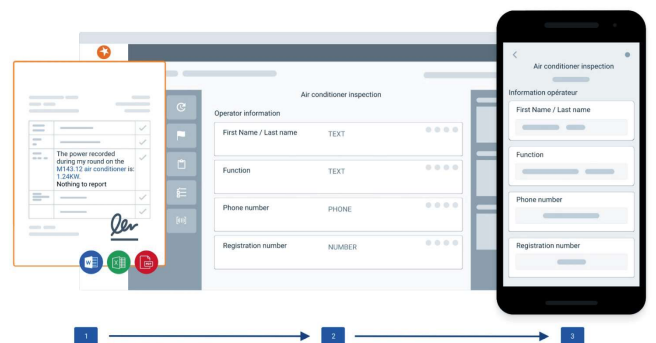
Plan and schedule jobs

Boost response times and increase visibility by planning jobs in advance, and choosing the right people for the right task.

Dashboards

Analyse all the data collected in the field by your operators, so you can:

- **Monitor** the progress of jobs and meet every deadline
- **Improve** investment decisions and prioritise maintenance tasks and operation activities, thanks to the real-time overview of your assets
- **Identify** the need for training and process optimisation ensuring you meet performance targets.



Mobile Job Management

Schedule, manage and view job status in real-time. The mobile app lets your workers plan ahead, effectively carry out inspections and keep you updated.



Mobile Asset Inspections

Automate the inspection process and get a 360° view of assets and status, enabling you to optimise and prioritise jobs - improving overall delivery of service



Mobile Defect Management

Improve how you trace, supervise, identify and close defects. Capture issues at source and send automatic updates with pictures and notes - even when offline



Other Mobile Workflows

Digitise any paper-based process completed in the field including work orders, plant inspections, health and safety forms and daily site diary checks.

Get in Touch with our friendly experts to learn more about Causeway's benefits to your business:

+44 1628 552000

solutions@causeway.com

www.causeway.com